

INDUSTRIAL

StrongArm™

Barrier Arm Operator

Ultra reliability • 2,000 cycles per day • Heavy arms • Wide openings • Low maintenance



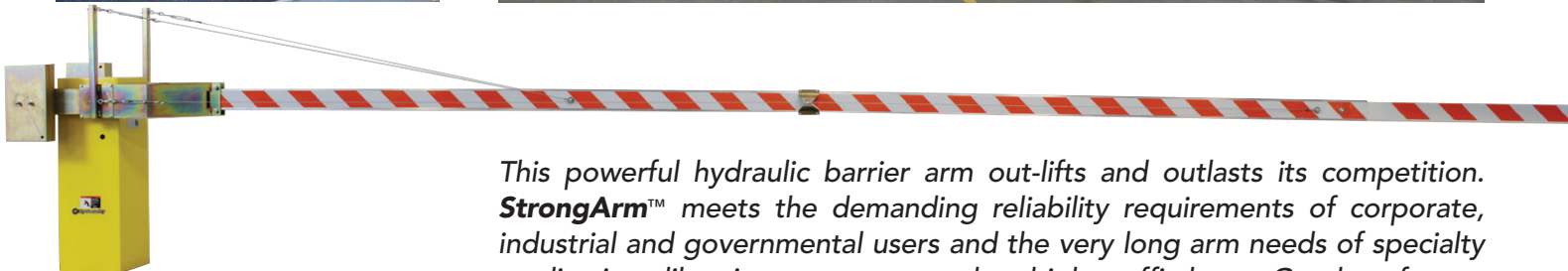
Corporate



Military



Port



8 models: Arms from 10 ft to 36 ft.
Battery backup available.

*This powerful hydraulic barrier arm out-lifts and outlasts its competition. **StrongArm™** meets the demanding reliability requirements of corporate, industrial and governmental users and the very long arm needs of specialty applications like airport runways and multiple traffic lanes. Gentle soft-start and soft-stop extend operator life by preventing mechanical wear and tear.*

APPLICATIONS

Industrial
Government
Aviation
Military
Corporate
Commercial

TYPICAL SITES

Port
Highway
Airport
Railroad
Corporate Campus
Petrochemical Plant



Aviation



Industrial

OPERATOR Hydraulic, industrial grade components. Open or close: 2 to 8 seconds. Up to 36 ft arms. Aluminum, fiberglass, wood arms. Side or yoke mount. T-Lock. All voltages/phases. 2,000 cycles per day. **Smart Touch Controller** with diagnostics and integrated security reporting. Seamless synchronization with all HySecurity operators for master-slave, sally port or other specialized applications.

Ultra Reliable High Security

Distributed by:



Power Door Products

(914) 698-5083

www.PowerDoorProducts.com

HySecurity® operators exceed the most demanding strength, quality and reliability specifications. The uniquely design-engineered electronics detect, report and trigger automated site-specified actions when critical security breaches occur.

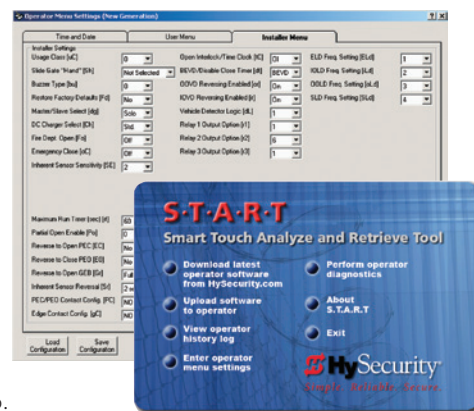
Abnormal operation or security breach reporting integrates easily to centralized security monitoring systems through HySecurity's unique, powerful and feature-rich Smart Touch Controller.

COMPUTER INTERFACE (S.T.A.R.T.) FOR SETUP AND DIAGNOSTICS

Smart Touch Controller reports many faults and conditions including:

- Open or close limit reached
- Tailgating
- Vehicle detector or loop malfunction
- Loitering
- Gate forced open
- AC power loss

Smart Touch Analyze and Retrieve Tool allows users to upload latest operator software, download fault logs, generate diagnostics, and program the operator using a laptop.



StrongArm™ Models

	Fast	Standard	Heavy Duty	
Model	StrongArm 14F	StrongArm 20	StrongArm 28	StrongArm 36
Part#	HTG 320-2 ST	HTG 320-3 ST	HTG 320-6 ST	HTG 320-8 ST
Duty Cycle	2,000 cycles/day	2,000 cycles/day	2,000 cycles/day	2,000 cycles/day
Horsepower	3/4 hp	3/4 hp	3/4 hp	3/4 hp
Open/Close Time	2 seconds to open; 3 seconds to close	3 seconds to open; 4 seconds to close	5 seconds to open; 6 seconds to close	8 seconds to open; 8 seconds to close
Arm Length Capacity	Up to 14 ft (4 m)	Up to 20 ft (6 m) Side mount available for arms up to 18 ft (5.5 m)	Up to 28 ft (8.5 m)	Up to 36 ft (11 m)
Arm Designs	Side mount. Aluminum, fiberglass or wood up to 14 ft (4 m)	Side or center yoke. Aluminum, fiberglass up to 16 ft (5 m), or wood up to 14 ft (4 m)	Center yoke. Aluminum up to 24 ft (7 m), fiberglass up to 16 ft (5 m), or aluminum-fiberglass 26+ ft (8+ m)	Center yoke. Aluminum or fiberglass up to 36 ft (11 m)
1 Phase Power	115/208/230 60 Hz 110/220 50 Hz	115/208/230 60 Hz 110/220 50 Hz	115/208/230 60 Hz 110/220 50 Hz	115/208/230 60 Hz 110/220 50 Hz
3 Phase Power	208/230/460/575 60 Hz 220/380 50 Hz	208/230/460/575 60 Hz 220/380 50 Hz	208/230/460/575 60 Hz 220/380 50 Hz	208/230/460/575 60 Hz 220/380 50 Hz
UL Listing	Usage Class I, II, III, IV	Usage Class I, II, III, IV	Usage Class I, II, III, IV	Usage Class I, II, III, IV
Warranty	5 year	5 year	5 year	5 year

Available with UPS Battery Backup

UPS Backup Model	StrongArm 14F UPS	StrongArm 20 UPS	StrongArm 28 UPS	StrongArm 36 UPS
------------------	-------------------	------------------	------------------	------------------

OPTIONAL ACCESSORIES: HY-5A intelligent vehicle detectors, UPS battery backup, custom colors, arm light kit and heater. Compatible with most available access control, safety, vehicle detection and many other accessories.

SYSTEM DESIGN SUPPORT: Contact HySecurity for CAD drawings, tech manuals, help with specialty site requirements or other specifications support. Download operator specifications online at hysecurity.com or call HySecurity for a complete list.

Inside the StrongArm Power Coupling to Shaft

